

WE VALUE



YOUR HOME



Kibble Close, Didcot
£1,250 PCM



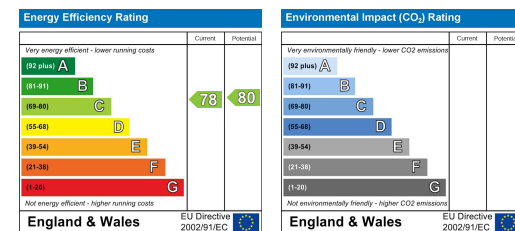
Available Immediately for Long-Term Let, Un-furnished

If a convenient location for local amenities is a priority for you then this two-bedroom, ground floor apartment could be ideal. Benefiting from, parking, a fitted kitchen and two double bedrooms. This property is just a short distance from Didcot Station with direct links to London Paddington.





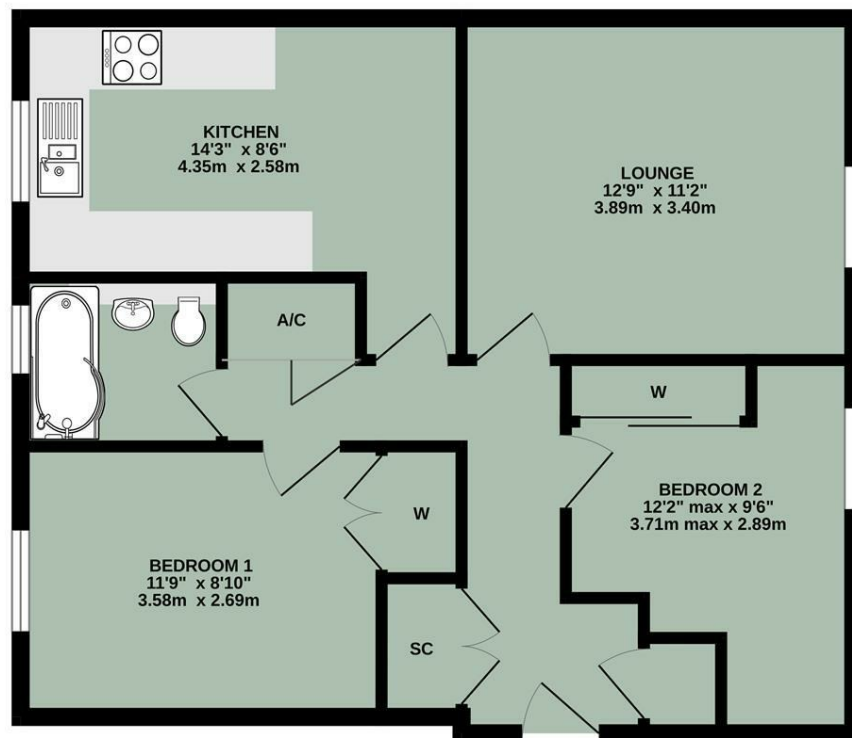
- AVAILABLE IMMEDIATELY FOR LONG-TERM LET, UNFURNISHED
- GROUND FLOOR APARTMENT
- CLOSE TO DIDCOT TRAIN STATION & AMENITIES
- TWO DOUBLE BEDROOMS
- KITCHEN/BREAKFAST ROOM
- PARKING



Energy Efficiency Graph

Floor Plan

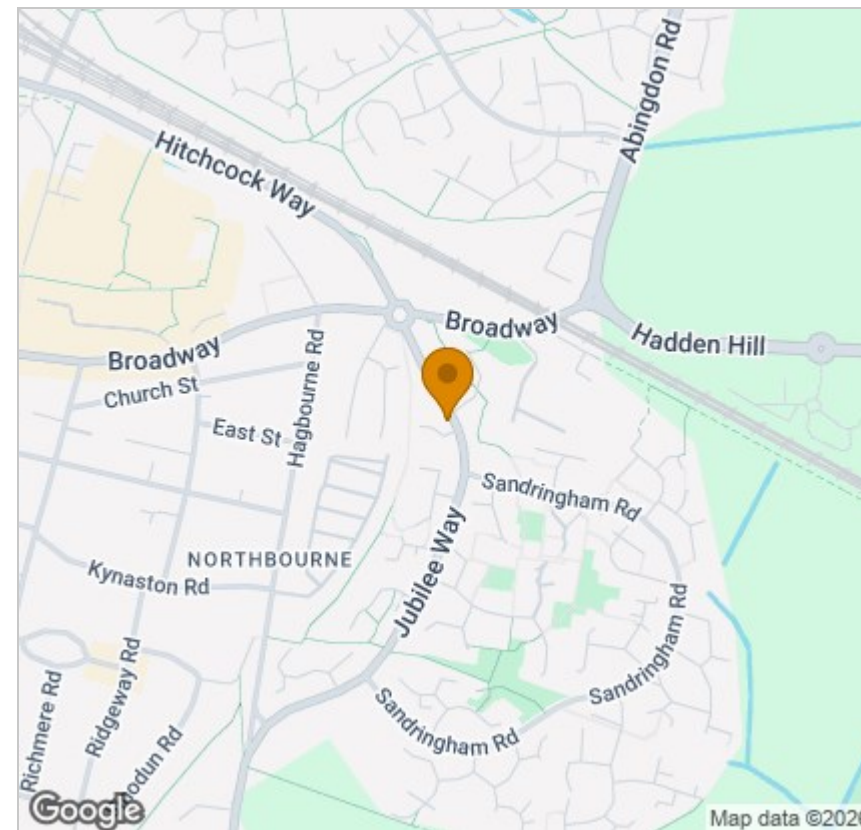
GROUND FLOOR
624 sq.ft. (58.0 sq.m.) approx.



TOTAL FLOOR AREA : 624 sq.ft. (58.0 sq.m.) approx.

Whilst every attempt has been made to ensure the accuracy of the floorplan contained here, measurements of doors, windows, rooms and any other items are approximate and no responsibility is taken for any error, omission or mis-statement. This plan is for illustrative purposes only and should be used as such by any prospective purchaser. The services, systems and appliances shown have not been tested and no guarantee as to their operability or efficiency can be given.
Made with Metropix ©2025

Area Map



Viewing

Please contact our In House Sales & Lettings Office on 01491 839999 opt.1
if you wish to arrange a viewing appointment for this property or require further information.

These particulars, whilst believed to be accurate are set out as a general outline only for guidance and do not constitute any part of an offer or contract. Intending purchasers should not rely on them as statements of representation of fact, but must satisfy themselves by inspection or otherwise as to their accuracy. No person in this firm's employment has the authority to make or give any representation or warranty in respect of the property.

28 St Martins Street, Wallingford, Oxfordshire, OX10 0AL

Tel: 01491 839999 opt.1 Email: sales@inhouseestateagents.co.uk www.inhouseestateagents.co.uk